

BRINGING THE WORLD TO OMAHA

# 2022

ANNUAL REPORT





## BRINGING THE WORLD TO OMAHA

In 2022, our work increasingly connected us — and our community — to the rich tapestry of human history from around the globe. Look for pinpoints throughout this report noting some of the places our collaborations, exhibits, storytelling and outreach programs have originated from to bring the world to Omaha!



*Mvezo, South Africa*



## MISSION

Provide relevant educational and entertaining opportunities within the region that exceed customer expectations, while preserving our community's vibrant cultural history.



# VISION

The Durham Museum will serve as a recognized, premier resource for education, entertainment and historical preservation in our region.

We will be the venue of choice in our market by providing a unique, engaging and memorable experience professionally presented to every customer.



Christmas at Union Station Cultural Tree display

## TABLE OF CONTENTS

- 4 Letters From:  
The Secretary of the Smithsonian Institution &  
The Durham Museum's Executive Director
- 6 Year in Review
- 18 Board of Directors
- 19 On the Horizon
- 20 The Durham Society
- 22 Patrons
- 26 Program Supporters
- 27 Gifts
- 30 Financial Statement
- 31 Ways to Give

Students from Mandela Elementary tour  
*Nelson Mandela: The Official Exhibition*





# 2002–2022: TWENTY YEARS TOGETHER

## FROM THE SECRETARY OF THE SMITHSONIAN INSTITUTION

In 2022, The Durham Museum celebrated its 20th Anniversary as a Smithsonian Affiliate. The museum became Nebraska's first affiliate in 2002, unlocking endless opportunities from the nation's largest museum. The history that has passed through Omaha since that time is extraordinary. From personal artifacts once belonging to global leaders like Winston Churchill, Nelson Mandela and Abraham Lincoln to iconic artists like Lady Gaga, Katharine Hepburn and Jim Henson, the Omaha community has had the opportunity to gain a deeper understanding of and appreciation for our collective history.

Affiliates are a critical part of the Smithsonian's work across the nation. Not only do they connect their visitors with the Smithsonian, but also inspire their communities to deepen their understanding of critical issues and become more informed and curious learners. More than 30 million people visit the Smithsonian each year; there are many more who do not have that opportunity. Our 200+ Affiliate organizations serve those who are not able to travel to our museums in Washington, D.C. and New York. We are grateful for the collaboration with The Durham Museum and look forward to continuing our work together in connecting communities near and far to the Smithsonian.

Lonnie G. Bunch III, Secretary of the Smithsonian Institution



Smithsonian Institution  
Washington, D.C.



“

Connecting  
communities  
near and far to  
the Smithsonian.

- Lonnie G. Bunch III







## FROM THE DURHAM MUSEUM'S EXECUTIVE DIRECTOR

In 2002, The Durham Museum began an exciting partnership with the nation's largest museum, education and research complex – the Smithsonian Institution. Just five years earlier, the Smithsonian created a program to help them fulfill their purpose: The increase and diffusion of knowledge. The launch of the Smithsonian Affiliations program opened doors for museums from across the nation and The Durham Museum was no exception.

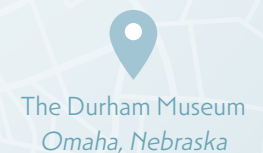
The Durham has collaborated with “the nation’s attic” to bring more of our vibrant, complex and historic world to Omaha. Throughout 2022, we celebrated our 20-year partnership early and often with opportunities ranging from public programs to institution-building endeavors that reached far beyond Union Station’s walls. Since becoming Nebraska’s first Smithsonian Affiliate, museum membership and attendance have more than doubled. This affiliation is a point of pride for the entire museum team and is a relationship that only continues to grow and strengthen.

Over the course of the year, we saw other aspects of the museum’s world flourish. Attendance and membership continued their steady climb back to pre-pandemic levels. Two major projects — the first phase of restoration to Union Station’s Art Deco ceiling and expansion of our historic Soda Fountain’s capabilities — represented the continuing role of our institution as caretakers of an ever-vibrant National Historic Landmark building. We found deepening impact with students and schools across the metro and beyond, continued to reintroduce long-standing community events and began to cast a vision for the future of the museum.

As always, our members, supporters and friends continue to be at the heart of what we do. Thank you for being such loyal champions of our mission to bring history — and the world — closer to our community.

Sincerely,

Christi Janssen, Executive Director







Edem K. Garro performs at Saturday Jazz and Blues at The Durham



Sugar Hill Nightclub  
Newark, New Jersey

EverGreene Architectural Arts  
Brooklyn, New York

# 2022 YEAR IN REVIEW



"40 CHANCES" Roundtable Series: Hunger and Water (virtual program)

Throughout the year, The Durham Museum celebrated the many ways it connects Omaha to exciting opportunities from our own backyard to halfway across the world. Online, onsite and in the community, The Durham sought new and impactful ways to bring the world to Omaha.

From the start, 2022 was full of unique ways for visitors to engage with history. The first months of the year saw the museum's exhibition galleries full with displays exploring food insecurity around the globe (***40 Chances: Finding Hope in a Hungry World***), modern interpretations of the impact of the Women's Suffrage Movement (***Beyond the Vote***), the enduring impact of jazz (***Billie Holiday at Sugar Hill: Photographs by Jerry Dantzic*** and ***A Territory of Sound***) and two intern-produced displays highlighting rarely-seen objects from the Byron Reed and other museum collections. These displays were supported by roundtable discussions connecting the subject matter of ***40 Chances*** to the Omaha community, as well as a **Jazz and Blues series** showcasing local talent in Union Station. We celebrated our largest **Martin Luther King, Jr. Community Day**





Martin Luther King, Jr. Community Day



Art Deco ceiling restoration in the Swanson Gallery



Nelson Mandela: The Official Exhibition

event yet, with over 2,000 visitors joining us to commemorate the civil rights icon's legacy with a host of community-building activities. The museum also launched two major projects: the restoration of the Art Deco ceiling in the Swanson Gallery and expansion of the Soda Fountain's back-of-house capabilities. The projects were ready to be enjoyed by eager visitors by the end of the year.

With March came the debut of the much-anticipated ***Nelson Mandela: The Official Exhibition***. This immersive display explored Mandela's life and legacy through impactfully designed galleries that featured rarely seen film, photos and more than 150 historical artifacts and personal belongings on loan from the Mandela family, museums and archives worldwide. In addition to the exhibition, the museum developed the **Community Conversation Gallery**, which featured objects accessioned into The Durham's collection following social justice demonstrations during the summer of 2020. This gallery invited visitors to reflect on how Nelson Mandela's message continues to resonate today, drawing parallels between his story and ongoing calls for social justice in our community and beyond. To guide our planning and programming, The Durham Museum formed an advisory committee comprised of local partners and representatives from the Milwaukee Public Museum and America's Black Holocaust Museum, which had previously hosted the display. The exhibition was



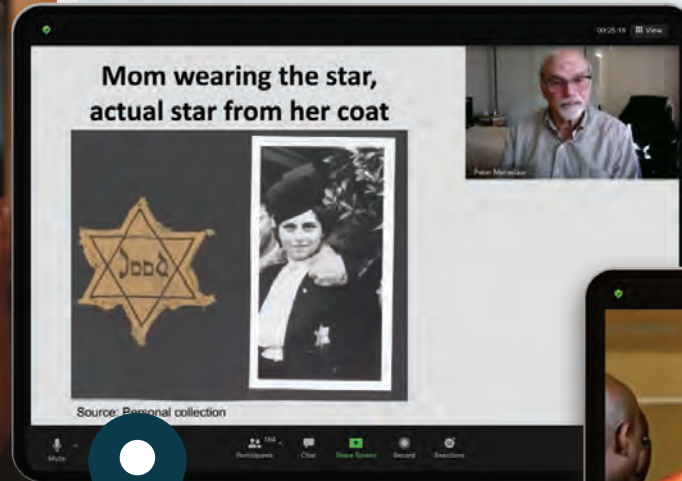
Community Conversation Gallery



African Culture Connection performs at the Opening Day Celebration



Amsterdam, The Netherlands



Virtual lecture with the Institute for Holocaust Education featuring Peter Metzelaar

Johannesburg, South Africa



"My Life with Mandela" featuring Zelda la Grange virtual lecture



the focal point of much of the museum's programming from March through early July. In addition to serving thousands of students through field trips and onsite programs, The Durham engaged the community through an **Opening Day Celebration**, a **Community Free Admission Day** in April, a virtual lecture presentation featuring Mandela's personal secretary **Zelda la Grange** and more. The museum also partnered with SHARE Omaha to promote **#MyMandela67**, a community volunteering initiative that challenged individuals to donate 67 minutes of their time to a cause close to their heart in honor of Mandela's 67 years spent fighting for social justice. For its part, 40 members of The Durham staff donated their time to clean up areas around the museum and a portion of Abbott Drive in partnership with Keep Omaha Beautiful. March also saw our continued long-standing partnership with the Institute for Holocaust Education through a special lecture featuring **Peter Metzelaar**, who survived the Holocaust because of the Dutch Underground and other selfless Nazi resisters. In April, the popular Aerial View of Omaha mural — restored by Kenneth Bé of the Gerald





Museum staff donate their time for #MyMandela67



Fossil Fridays series



Dinosaur Revolution

R. Ford Conservation Center in 2021 — found a permanent home in the museum's Trish and Dick Davidson Gallery, just as visitors enter the permanent displays exploring Omaha's history.

The prehistoric world was on display during the summer, with ***Dinosaur Revolution*** serving as The Durham's family-focused offering. This maze-like exhibition, developed by the award-winning team at Minotaur Mazes, featured hands-on interactive experiences and problem-solving interpretive features that explored more the 150 million years of dinosaur history. More than 400 museum members joined in on a special preview event, with thousands more members and visitors participating in a new **Fossil Fridays** series throughout the season. The busy summer months saw Union Station full of families, summer campers and community organizations serving youth and adults alike, with more than 5,000 visitors participating in *Dinosaur Revolution*-themed programming in just three months. Our focus on family education and entertainment extended beyond our walls with the debut of **Museum Live! in the Park**, during which our education team brought live programming for the first time to Omaha's newly reopened Gene Leahy Mall. As the summer wound down, we hosted another highly successful **Root Beer Float Day**, with over 1,500 children and adults stopping in to celebrate the classic treat at Union Station's historic Soda Fountain just before the start of the school year.







*Dressing the Abbey*



Guadalajara, Mexico

Edwardian elegance and history followed in the fall with ***Dressing the Abbey***, an exhibition featuring 35 original costumes created for the highly popular *Downton Abbey*™ British television series. The museum's exhibition team spent months creating a custom entrance based on Highclere Castle and environments inspired by scenes from the series to bring the exhibition to life. Nearly 400 guests — most of whom were in costume — joined us for a special preview event entitled **Downton at The Durham** that featured series-inspired Hors d'oeuvres, drinks and décor, plus ballroom dancing lessons, vintage cars, photo ops and indoor croquet lessons from Croquet Omaha. The exhibition was on display for a broad range of public-facing events that anchored the season, including **The Great HALL-oween Haunt** and two fundraising events hosted by The Durham and the On Track Guild. We also continued to celebrate our longstanding affiliation with the Smithsonian Institution by taking part in Smithsonian Magazine's **Museum Day** and screening the Smithsonian Channel's ***America in Color*** film series, an exploration of the 1930s, 40s, 50s and 60s. As the year came to an end, Union Station came alive with the sights and sounds of the holidays with our annual **Christmas at Union Station presented by FNBO** tradition and the return of the **Holiday Cultural Festival**. More than 1,600 balloons fell from the ceiling of the Suzanne and Walter Scott Great Hall to the enthusiastic delight of over 1,500 attendees of our **Noon Year's Eve Celebration** on December 31, providing the perfect end to an incredible year.



*Downton at The Durham*

10 YEAR IN REVIEW



Highclere Castle  
Highclere, United Kingdom





Holiday Cultural Festival



America in Color film series



Teachers' Week virtual lecture featuring Dr. Monique M. Chism,  
Under Secretary for Education, Smithsonian Institution



Enjoli & Timeless perform for the Virtual Tree Lighting Ceremony





Theater Row: Stage and Screen in Early 20th Century Omaha



History with Hops



27,475  
FOLLOWERS



7,350  
FOLLOWERS

“

We haven't put our tree up yet, but I'll tell you something, we're going to do it next week and this is how I want to do it.

- Jimmy Kimmel  
*Jimmy Kimmel Live!*



Hollywood  
Los Angeles, California



Members of the International Edsel Club stop by for a guided tour



Root Beer Float Day



Christmas at Union Station tree harvest



# BRINGING THE WORLD TO OMAHA'S FRONT DOOR

Ninety years ago, Union Station was considered the “Front Door to Omaha.” Throughout 2022, The Durham Museum continued to bring exciting educational and entertaining experiences to our city from across the world.

## MAJOR EXHIBITIONS

### ***Billie Holiday at Sugar Hill: Photographs by Jerry Dantzig***

From the Smithsonian Institution Traveling Exhibition  
Service in cooperation with the Jerry Dantzig Archives

### ***Nelson Mandela: The Official Exhibition***

From Round Room Live in partnership with The Royal  
House of Mandela (RHoM) and RHoM Investments

### ***Dinosaur Revolution***

From Minotaur Mazes

### ***Dressing the Abbey***

From Exhibits Development Group in cooperation  
with Cosprop Ltd., London, England

## LOCAL FOCUS EXHIBITIONS

### ***A Territory of Sound: African American Jazz Orchestras in Early 20th Century Omaha***

### ***Theater Row: Stage and Screen in Early 20th Century Omaha***

### ***On the Homefront: Nebraska and World War II***

### ***A Gentleman's Collection: Highlights from the Byron Reed Vault***

### ***Political Practices: The Uses of Broad­sides as Propaganda Holiday Memories at Brandeis Department Store***

## GUEST LECTURES

### ***40 Chances Round Table Series***

**Behind-the-Scenes with Jerry Dantzig  
presented by Grayson Dantzig**

**Anansi The Spider Stories: West African and  
Caribbean Folklore with Bobby Norfolk**

**Holocaust Remembrance Lecture featuring  
Peter Metzelaar, in partnership with the Institute  
for Holocaust Education**

**My Life with Mandela featuring Zelda la Grange**

## SPECIAL PROGRAMMING & COMMUNITY EVENTS

Martin Luther King, Jr.  
Community Day

Saturday Jazz and Blues  
at The Durham

Museum Insider Tours

River City History Tours

Scout Merit Badge  
Workshops

Nelson Mandela  
Community Day

Nebraska SciFest Expo

\$5 after 5 Series

History with Hops

Root Beer Float Day

Teachers' Week

Downton at The Durham

VIP Tea Talk

Smithsonian Magazine  
Museum Day

The Great HALL-oween  
Haunt

Hallo-weekend

Veterans Day

Sentimental Journey

Coming Home for the  
Holidays Luncheon &  
Market

Virtual Tree Lighting  
Ceremony

Holiday Cultural Festival

Holiday Lights Family  
Festival

Family Nights with Santa

Noon Year's Eve Celebration



Guest  
speaker  
Bobby  
Norfolk

209,741

ANNUAL ATTENDANCE

7,403

HOUSEHOLD  
MEMBERS



Kathleen Franz, National Museum of American History

## PROGRAM SPOTLIGHT

### *Museum Live!*

In its third year, the nationally-award winning *Museum Live!* program emerged as one of the museum's most impactful student education initiatives. Each week during the school year, students from across Omaha, greater Nebraska and beyond connect to learn about new history topics from educators at The Durham and rotating guests from the Smithsonian Institution, Smithsonian Affiliates, Nebraska State History Museum at Morrill Hall and other guest contributors. Since its inception in the fall of 2020, more than 167,000 students and teachers have taken part in *Museum Live!*

### Virtual & Onsite Programming: Working Together

Of all the schools that booked an onsite field trip in 2022, over 50% also participated in at least one other onsite or virtual program. Many of these groups participated in more than one other program, with a few classrooms accessing *Museum Live!* as many as 20 times during the year. In fact, museum educators appearing frequently on *Museum Live!* were often noticed during field trips by students and teachers alike.

*Museum Live!* fan-favorite  
Professor Durham ▶

14 YEAR IN REVIEW



57,500

*Museum Live!* & virtual  
field trip participants

American Historical Theatre  
Philadelphia, Pennsylvania



71,509  
Total participants  
across all education  
programs

# LEARNING &



## THE IMPACT OF EDUCATION OUTREACH

61,881	Students, student family members & teachers served
71,509	Total participants across all education programs
79	Of Nebraska's 93 counties served
75+	Local and national collaborating organizations
585	Unique schools
7	University interns
84%	Omaha area Title 1 schools served
84%	Omaha area elementary schools served



Morrill Hall  
Lincoln, Nebraska

16

Smithsonian  
educators featured  
on *MuseumLive!*

“

Our students do not always have the opportunities to visit a place like The Durham Museum. What a great opportunity for them to learn about the world they live in! We can't even believe the generosity of this trip. Thank you so much!

– From a Teacher  
*Class visit & transportation costs underwritten*



11,330  
Onsite field trip  
participants



2,723  
Summer & winter  
camp participants

National Museum of American History  
Washington, D.C.

# ENGAGEMENT



## PARTICIPANTS IN SCHOOL-BASED PROGRAMS

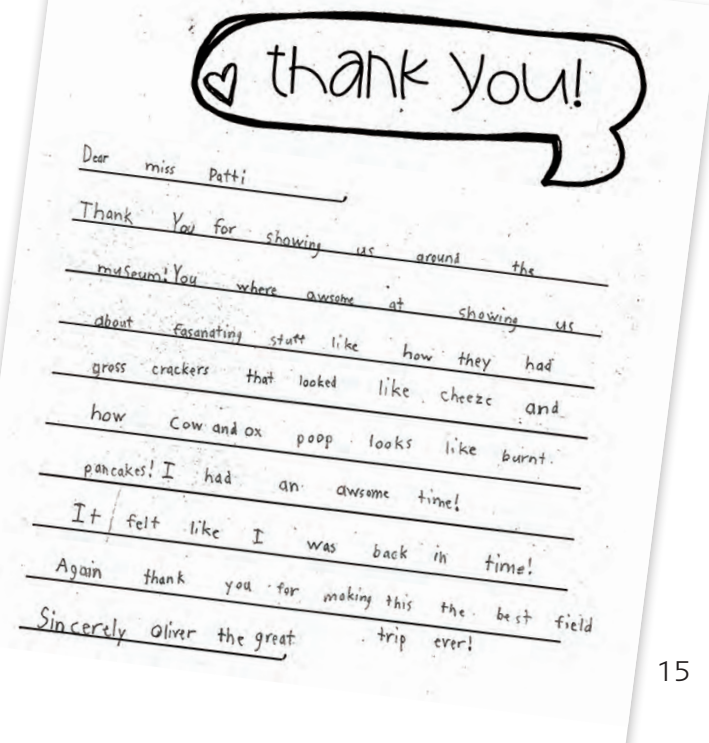
57,500	<i>Museum Live!</i> & virtual field trips
11,330	Onsite field trips
179	Inclusive Museum Initiative
2,420	Scholars in Residence
692	Teachers' Week & workshops
3,020	Student workshops



## PARTICIPANTS IN PUBLIC PROGRAMS

2,723	Summer/winter camps
794	Lectures
606	Scouting programs
3,575	Other tours/programs

Student Letter ►





# COLLECTION HIGHLIGHTS

## BRINGING "THE COLLECTION" TO OMAHA

Did you know that only about 3% of objects in the museum's permanent collection are on display at any given time?

Throughout the year, our curatorial and collections team worked to share more of the collection with the public at museum events like History with Hops and our popular Museum Insider Tour series, with local organizations and researchers, as well as online through social media posts featuring our collection and photo archive.

“

Upon receiving my piece of anti-suffragist propaganda, I was immediately overcome with a sense of pride for how the perception of women has evolved over the last 100 years.

- Ariel Panowicz

▲ Following the museum's 2021 exhibition *Beyond the Vote*, three local artists graciously donated their pieces to our permanent collection. The pieces were modern reflections of Women's Suffrage propaganda from a century ago and were created by Ariel Panowicz, Sophie Newell and Nancy Friedeman-Sanchez.



◀ A collection of items related to the Paxton & Gallagher wholesale grocery business in Omaha. Fondly remembered for their Butter-Nut Coffee, the collection includes coffee cans and manufacturing materials, as well as boxes of spices from the KAMO brand, dozens of ledgers and catalogues documenting the business, and a large number of archival materials, including receipts and business dealings.  
*Donated by the Gallagher Family*

▶ Two chairs used by Santa Claus at Brandeis Department Store until its closure. They were then purchased at auction and loaned to other businesses for visiting Santas, including the Ralston American Legion. They were featured, surrounded by toys again, in our *Holiday Memories at Brandeis Department Store* exhibit during 2022's Christmas at Union Station season.  
*Donated by Bernie and Patricia Waschinek and Family*



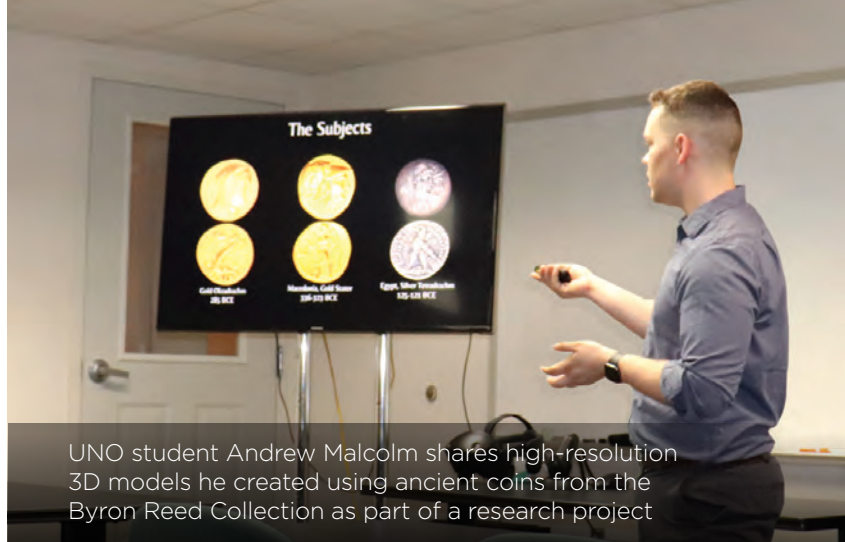


# 6,089

## Historic photos digitized

Images from the Photo Archive were part of the Omaha Public Schools' Making Invisible Histories Visible program

Trimble Wedding, 1948. The Durham Museum Photo Archive, John Savage Collection JS43D-326



UNO student Andrew Malcolm shares high-resolution 3D models he created using ancient coins from the Byron Reed Collection as part of a research project

- A collection of cheerleader uniforms, calendars, brochures and other memorabilia and merchandise from the Omaha Nighthawks of the United Football League. *Donated anonymously*
- Collection of programs, autographs, baseballs and souvenirs documenting the Omaha Cardinals minor-league baseball team, along with a handheld radio used to listen to the games. *Donated by Gary Cook*
- ▼ Collection of 60 pieces of souvenir glassware from the Trans-Mississippi and International Exposition. Phyllis Lueninghoener spent over 20 years searching for and collecting Trans-Mississippi souvenirs, particularly ruby flash glass, until her death in March 2021. Phyllis saw The Durham Museum's exhibit for the 100th anniversary of the Exposition in the late 1990s and it caught her imagination. She went on to research the event and purchase souvenirs on eBay. *Donated by Phyllis Lueninghoener*



# 762

## Objects added to permanent collection





# BOARD OF DIRECTORS

Stephen J. Abels, *Chairman*  
John K. Boyer, *Secretary*  
Stephanie Daubert, *Treasurer*  
Avner M. Applbaum  
Danny Begley, *Ex-Officio Member*  
Timothy R. Crockett  
Ken Keegan  
Bradley L. Knuth  
Beverly Kracher  
Joe Lempka  
Rodrigo Lopez  
John P. Nelson  
Scott D. Moore  
Mary Ann O'Brien  
Lisa Olson  
Mary Reckmeyer  
Tom Warren

*Emeritus Members*  
Richard R. Bell  
John K. Wilson







DeWitty, Nebraska



Le Cordon Bleu  
Paris, France

# ON THE HORIZON

The Durham's latest Institutional Plan, formally adopted in 2021, will guide the museum's future work to elevate our care of Union Station, enhance our exhibitions and experiences and ensure the long-term stability of our operations.

## KEY GOALS FOR 2023

- Continue building attendance and membership by presenting engaging exhibits and memorable events
- Partner with Washington, D.C.-based Gallagher & Associates and community stakeholders to finalize a master plan for the future of Union Station and our permanent exhibitions
- Complete the two-year restoration of Union Station's Art Deco ceilings
- Continue refining our educational approach to provide multiple ways for students, teachers and families to access and experience the museum

## TEMPORARY EXHIBITIONS FOR 2023

- *Hall of Heroes*
- *Descendants of DeWitty*
- *The Lunchbox: Packed with Pop Culture*
- *Towers of Tomorrow featuring LEGO® Bricks*
- *Julia Child: A Recipe for Life*
- *White Christmas – The Exhibition*



Sydney, Australia



# THE DURHAM SOCIETY

The Durham Society was established to provide designated support to The Durham Museum and its cultural and educational programming. This philanthropically-minded group is committed to raising the awareness of history's impact on our community and region. The Durham Society's Heritage Circle ensures long-term financial sustainability for The Durham Museum and recognizes the vested interest of our generous contributors.

## HERITAGE CIRCLE \$25,000

Anonymous  
Sally G. Bekins  
Patricia K. and Richard R. Bell  
Lynne D. and John K. Boyer  
Elizabeth and Michael S. Cassling  
Trish and Richard K. Davidson  
Karen A. and F. Wesley Dixon  
Debby Durham  
Barbara S. and Steven H. Durham  
Margaret and Griffith Evans  
Michael G. Fahey  
Diane and Harlan O. Falk  
Amy and Todd Foje  
Carmen and John E. Gottschalk  
Susan and George F. Haddix  
Joan Squires and Daniel A. Hamann  
Deryl F. Hamann  
Rhonda A. and Howard L. Hawks  
The late Mary C. Heider  
Kirsten and Steve Hosman  
Vernie and Carter Jones  
Karen and Ken Keegan  
Amy J. and Bradley L. Knuth  
Kacey and Joe Lempka  
Mary and Rodrigo Lopez  
Mary H. Lundgren  
Marilyn and Carl Mammel  
Amy M. Haddad and Steven S. Martin  
Nancy and Michael R. McCarthy  
Cynthia and the late  
Thomas F. McGowan

Elizabeth A. and Chris J. Murphy  
The late Anne E. and John P. Nelson  
David and Jane Offutt  
Sandra S. and David R. Parker  
Polina and Robert N. Schlott  
Amy L. Scott  
Lori L. and W. David Scott  
Peggy and David L. Sokol  
Diann and Mark B. Sorensen  
Ann M. and Kenneth E. Stinson  
Gail M. Werner-Robertson and  
Scott A. Robertson  
Mary A. and John K. Wilson  
Gail W. and Michael B. Yanney

## FOUNDERS \$5,000

Joy L. and Stephen J. Abels  
Cindy M. and Mogens C. Bay  
Beverly A. and Edward L. Burchfield  
Karla and Scott Cassels  
Kathy and Gary Gates  
Carol Gendler  
Elizabeth B. and John W. Hancock Jr.  
Cindy and Scott C. Heider  
Carole L. and Robert Julian  
Julie E. and Eric L. Keen  
The Bill and Leona Kernen Family  
Stephanie F. and John J. Koraleski  
Gerry and Bruce R. Lauritzen  
Shirley J. and Daniel P. Neary  
Sandra and Jeffrey A. Passer

Loretta S. and Douglas E. Patterson  
Patricia S. Peterson  
Melodee R. Thompson

## MEMBERS \$1,000

Janie O'Keefe Addy  
Anonymous  
Shirley A. and James O. Armitage  
Judith M. and Robert D. Bates  
Lori L. and John T. Belford  
Pamela and Richard A. Berry  
Christina L. and Ronald S. Blumkin  
Rolando P. Garcia and David J. Boyer  
Holly and Michael Boyer  
Beverly and William Breyfogle  
Rkachea and Bruce Carpenter  
Phyllis D. and Norman W. Choat  
Kimara J. and Kevin S. Clark  
Catherine Lang and John H. Conley  
Mary and Patrick Corrigan  
Mary M. and Timothy R. Crockett  
Susan and William A. Cutler III  
Mary A. and Hal J. Daub  
Stephanie and Howard Daubert  
Claudia and Anthony Deeb  
Mary and Daniel D. Dolan  
Melissa J. and Patrick J. Duffy  
Michael L. Faust  
Shawna L. and Grant A. Forsberg  
Baerbel and Theodor Freye  
Julie C. and Lance Fritz

Tamara and Michael Gitter  
Nancy R. and Randall Hanson  
Karen and the late Kim Hawkins  
Melanie and David Hecker  
Amy and John Henderson  
Terri and Dennis C. Hirschbrunner  
Anne M. Hubbard  
Linda and Ronald Hughbanks  
Maria and Dean Jacobsen  
Christi A. and Thomas C. Janssen  
Jean F. and Lee K. Johnson  
Marjorie H. and Michael D. Jones  
Letha V. and Thomas M. Kunkel  
Diane and James E. Landen  
Mary Jo and Robert M. Langdon Jr.  
Emily W. and Clarkson D. Lauritzen  
Kimberly A. and Scott A. Leinen  
Kathryn Lewis  
Elizabeth and Rodney S. Markin  
Krista and Jeff McDonald  
Tonya and Shawn McIlnay  
Danene J. Tushar and Scott D. Moore  
Rozanne and Duncan J. Murphy  
Rita and Donald Otis  
Stacey and Roy Patterson  
Audrey A. and Paul M. Paulman  
Emily and Erik Peterson  
Cassandra J. and Gary A. Pietrok  
Lori and Mitch Pirnie  
Sandra K. and Walter M. Price  
Judith K. and Randy Pritza  
Shannon and Chris Purdy  
Teri A. and Ronald N. Quinn  
Mary and Matt Reckmeyer



Lynda Thomas Reed and John T. Reed Sr.  
 Stacie and Robert A. Reed Jr.  
 Cindy and Robert W. Rieke  
 Lisa and William Roskens  
 Constance Ryan  
 Colleen M. and Scott A. Schmidt  
 Heather and Bryan M. Schneider  
 Mary E. and Tobin A. Schropp  
 Ruth and J. William Scott  
 Betiana and Todd Simon  
 Annette L. and Paul G. Smith  
 Mary Jo R. and Leo W. Smith II  
 Mary and Leonard M. Sommer  
 Beverly Kracher and Jerry Stegeman  
 Stacy L. and Ronald E. Stohlmann  
 Margaret and James A. Timmerman  
 Phyllis Toebben  
 Julie A. Lasto and Jeffrey P. Totusek  
 Joan R. and William C. Truhlsen  
 Christy and Robert W. Turner  
 Mary L. and James P. Verhalen  
 Laura and William Vodvarka  
 Aileen and Thomas Warren  
 Nancy C. and John W. Webster  
 Jane and Doug S. Wignall  
 Frank P. Willkie  
 Ashley and Corey J. Wilson  
 Janet and Henry E. Wojdyla  
 Nancy L. and Philip M. Wolf



Prehistoric Storytime



19th Annual Teachers' Night



The Great HALL-oween Haunt



# 2022 PATRONS

## GOLD

Anne E. Begley and Madeleine Begley  
Margaret M. and Casey Beran  
Dawn B. and Douglas J. Buchanan  
Sue Conley and Michael F. Stieghorst  
Toni and Terry A. Diel  
Beth H. Eliason  
Marlen D. Frost  
Beverly S. and Randall D. Greer  
Ann and Bill Hall  
Sally B. and William G. Hanley  
Sheri B. and Steven A. Idelman  
Jayne L. Timmerman and  
Daniel J. Jaksich  
M. J. Huerter and Richard P. Jeffries  
Mary Jetton  
Susan M. and James Johannes  
Donna L. and Matthew J. Johnson  
Bonnie and Richard Kolowski  
Robyn and James Kortan  
Wende and John F. Kotouc  
Lillian Krehbiel  
Melisa and Ashton Lagasse  
Cynthia K. and Phillip J. Lee  
Trina C. and Scott S. McCollister  
Jodie and Tim McGill  
Dorothy M. and Daniel L. McKinney  
Beth M. and Darrell A. Metcalf  
Mary E. and Kenneth J. Moy  
Peggy and David L. Noyes  
Mary Ann O'Brien and Jason Ramirez  
Lisa Paladino  
Lynn M. and Bradley A. Perry  
Mary and Carl Peters  
Laura A. and Randall E. Ritchie  
Mark Howard Schulze

Kathy and James K. Simpson  
Roseann and Jim Slattery  
Mary K. Stolinski and Robert S. Kenyon  
Susan A. and Michael E. Vanhessche  
Joan and William Vobejda, Jr.  
Janice A. and Thomas C. Wilson  
Michael Zack

## SILVER

Carrie and Reid S. Adkins  
Whitney and Karen B. Aman  
Polly Nicklin Andres  
Sally L. and James V. Armstrong  
Katie and Chad C. Bauerly  
Nancy N. and George J. Behringer  
Dat Le and Michael Billups  
Robert A. Bloechle  
Linda and Brent A. Blume  
Bruce Brackley  
Vanessa Roach and Pamela Brandin  
Jennifer R. Racine and G. Daniel Brooks  
Mary Ann Bailey and John E. Bush  
Bobbie C. and Holly Carlson  
Sarah K. and Greg W. Carlson  
Anne D. and James A. Carroll  
Tina L. and John A. Cherica  
Beth and Chuck Chevalier  
Sharon D. and Bruce A. Clawson  
Deborah Turner and David Connolly  
Laraine C. and David F. Conway  
Alfred Crawford  
Shirley A. and Thomas R. Dusek  
Kathleen and Gary Ensz  
Terry B. Finkle  
Lynn M. and Ed H. Fleming

Ann and Daniel B. Flood  
Linda B. Ford  
Nancy L. and George A. Gillespie  
Kathlyn and R. Michael Gross  
Shawn Hartman  
Linda S. Head and the late Bill Kathol  
Kimberly N. and Timothy Henze  
Kay and James A. Horwath  
Barbara and Christopher L. Ihle  
Lise Wagner and Vibeke T. Jensen  
Jeanie and Lance Jones  
Frances A. and Richard Juro  
Chloe and Amanda Karpf  
Teresa M. and Kirk L. Kellner  
Janice and Victor Kensler  
Marsha A. and Milton M. Kleinberg  
George E. Kleine and Thomas Knox  
Michelle Kompare and Ross Mathiasen  
Joan and Marc Kraft  
Victoria and David A. Krecek  
Andrea and Curtis J. Lane  
Debra J. Clarke and William H. Life  
Rosemary and John Lokie  
Karla and John Marburger  
Tricia and Jackson Martis  
Michael G. McDonald  
Crystal and Steven McHugh  
Margaret E. White and Ian McLean  
Kimberly and Alan Miller  
Joani T. Michael G. Mullin  
Mary and Thomas R. Murnan  
Kathryn A. and Joseph E. O'Connor Jr.  
Connie J. Osborne  
Roland Peschel  
A.J. Polhill III  
Michael Poston

Yvonne Pouchert  
Josephine B. and Richard A. Prusha  
Karin Zaverdinos Quandt and  
Jeff Quandt  
Elsa du Moulin and Silva Raker  
Deb and Neal S. Ratzlaff  
Ashish Dhingra and Mary Reeg-Dhingra  
Ashley and Brandon Rich  
Lynn M. and Raymond C. Richardson  
Christine M. and Jerald E. Ritter  
Carrie and Jeremy Roberts  
Janet Nelsen and  
Robert D. Robertson III  
Karen L. Robinson  
Kathleen and Louis J. Rotella Jr.  
Jeanne R. and Patrick J. Salerno  
Nancy L. and Jack Sarver  
Jerada and William J. Schlueter  
Patricia and Gerald M. Schomers  
Julie M. Schroeder  
Michele and James T. Shaw  
Steven J. Silver  
Mary J. McNamee and  
Kieth A. Simmons  
Amee J. and Timothy D. Snell  
Patricia and Joseph Snow  
Pamela S. and Jim E. Specht  
Gail L. and James G. Spevak  
Anna and Peter C. Stone  
Robin A. and Paul R. Stoupa  
Vance F. Taylor  
Thomas D. Thalken  
Sherry and Dennis P. Thompson  
Nancy M. and Alan G. Thorson  
Donna and James C. Trojanowski  
Chester H. Waters III



Sara and Joe Whetstone  
 Diane and Gary Wiekert  
 Wiesman Development Corporation  
 Judith Y. and James Wigton  
 Debbie and John Mark Wolff  
 Margery and Stephan Woodman  
 Connie K. and H. Randal Woodward  
 Beth and Brant Yantzer

## BRONZE

Nancy A. Abboud  
 Cheera Hubbard and Tracy J. Abdouch  
 Cathy A. and Doug K. Aden  
 Jerry Ahlvers  
 Jill and Daron Ailts  
 Margaret A. Alexander  
 Margaret A. Allington  
 Joanna and Theresa Amis  
 Carolyn O. Anderson  
 Diane and Matt Anielak  
 Kathryn D. Ewing and David D. Anson  
 Antoinette M. and James A. Bac  
 June and Ralph L. Bachmann Jr.  
 Lani E. and Larry D. Baker  
 Marta and Rich G. Balash  
 Rose and D.J. Barcal  
 John Barnhart  
 Laurene and Patrick Barrett  
 Ann H. and Edward S. Batchelder  
 Ann Marie and Trenten P. Bausch  
 Betty L. Beach  
 Pamela and Craig Bechtolt  
 Susan B. Beeghly  
 Nicole Hernandez and Glen Bennett  
 Jennifer and Tim Benson  
 Margaret and Robert Bieker  
 Anna and Laura D. Bilek  
 Lallenia and Brad Birge  
 Barbara A. and Frank M. Blank  
 Phyllis A. Blease  
 Anna Nelson and Larry Boehm  
 Judith A. Boelts  
 Jenny Munro and Richard K. Bonness  
 Diane R. and Thomas Borsh  
 Shannon R. and James S. Bosanek

The late David H. Bowman Jr.  
 Angela Aliano and Jeffrey Boyum  
 Kelly A. and Charles J. Braak  
 Barbara J. and Allen G. Branco Jr.  
 James Brentlinger  
 Kathy and Bob Brentlinger  
 Kathleen and Roger Brestel  
 Cynthia L. and Bradford Brodhagen  
 Norma R. and Mark L. Broin  
 Maria Brookhouser  
 Christine A. Webster and Randall Bruhn  
 Patricia and Bruce Brumm  
 Barbara J. and Gerald C. Brundo  
 Kathy Andersen and  
 Stanley E. Buchanan  
 Molly and Shane Bumsted  
 Cindy and Walt Bussey  
 Karla and John Butterbaugh  
 Dianne G. and Keith N. Bystrom  
 Karolyn and Karen K. Cahill  
 Maria T. and Christopher D. Cain  
 Yaeleene Calzada  
 Jan and Mark Campbell  
 Jennifer Palik and Mallory Cannon  
 Jeanette E. and Harold L. Capps  
 Larry W. Carlson  
 Tammy and Darren Carlson  
 Laura and Derek Castaneda  
 Donna K. Chaney  
 Stacy and Deven and Christensen  
 Arnel B. Citurs  
 April J. and Jon R. Clark  
 Elizabeth and Barry Cleaveland  
 Jill A. and Robert M. Cochran  
 Arlene and Paul G. Cohen  
 Sylvia B. Cohn  
 Rachel and Matthew Cole  
 Carrie Conley and Packy Colgan  
 Renae and Bryan Connolly  
 Mary M. Cooney  
 Kari and Bryce Curry  
 Marlina and Dusty Davidson  
 Julie and David Davis  
 Laurie L. and John S. Davis  
 Laurel and Miles D. Davis  
 Andrea Zimmer and Ross Davis  
 Randolph K. Davison

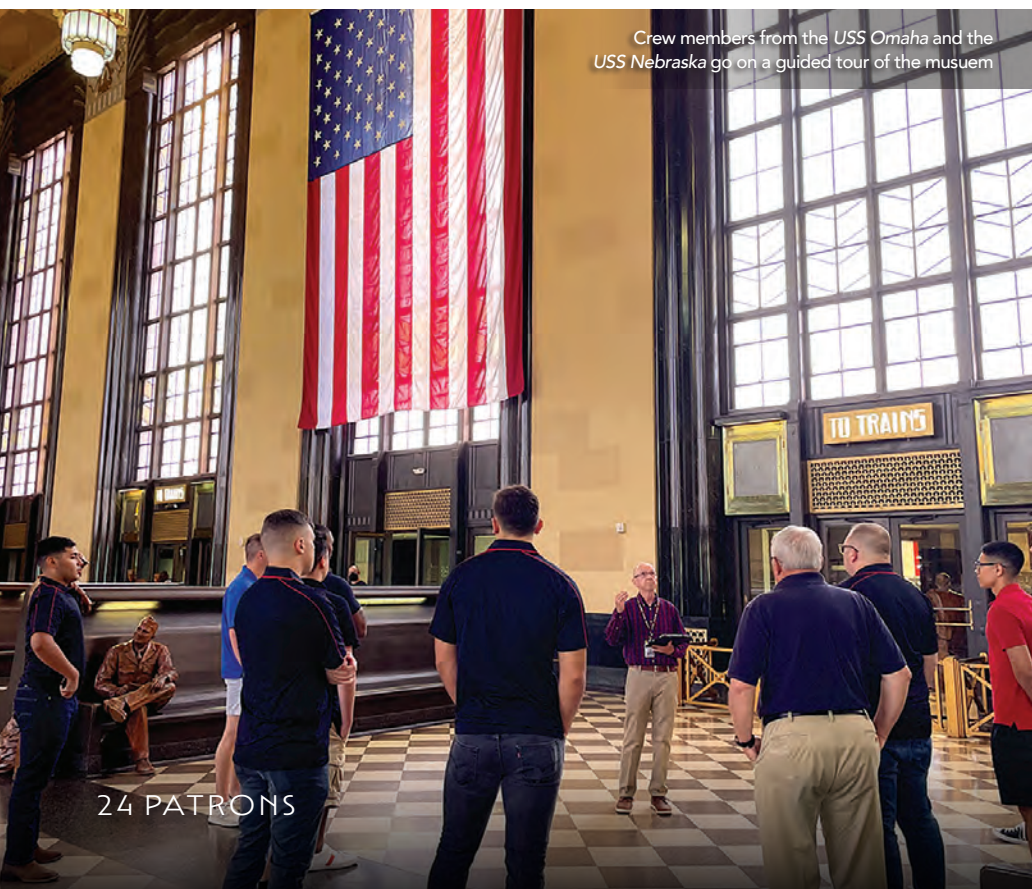
Andy Lim and Jeffrey DeLoss  
 Kathleen A. and Robert Dewhurst  
 Sally R. Carmichael and  
 Ronald J. Diimig  
 Mary E. and James C. Ditoro  
 Brenda L. and J. Ward Doering III  
 Elizabeth Dostal  
 Duane J. Dowd  
 Jennifer McGill and Brian Doyle  
 Linda B. and Charles A. Duckworth  
 Sue A. and William G. Dudzik  
 Valerie and Kim F. Duncan  
 Nancy A. Dunham  
 Nina L. Oldenkamp and  
 Patrick Dunning  
 Megan and Phillip Durham  
 Karen L. and Larry A. Dwyer  
 Catherine M. Eberle  
 Debbie and John M. Eckels  
 Elizabeth A. and Gary D. Edwards  
 Marci and Geoffrey Eggers  
 Portia and Clint Ehram  
 Cathy M. Roller and John F. Else  
 Gary A. Emenitove  
 Jill and Michael M. Erman  
 Bernadette C. and Paul W. Esposito  
 Victoria and Steven Estep  
 Barbara A. and Allan Fanning  
 Karen Farley  
 Joan B. and John J. Ferguson  
 Tracy Fields  
 Burton R. Finch  
 Joyce L. and Roger K. Fitch  
 Vanessa D. Timberlake and  
 Richard A. Flebbe  
 Melissa Hagerty and Sherry J. Fletcher  
 Jean M. Forman  
 Corrine J. and James A. Fougeron  
 Ruth D. Frazee  
 Laura Wynn and Eric Freeberg  
 Candida and Timothy Freese  
 Diana and Jessica K. Furst  
 Angela and Casey A. Gardner  
 Paula J. and Mark A. Garth  
 Terri A. Garvey  
 Kristine and Jared Gerber  
 Julie and Christopher Gerken

Timothy Dusek and Edward Germain  
 Mr. and Mrs. Phillip J. Glassman  
 Polly J. Goecke  
 Joan J. Goldapp  
 Kay Lynn and John C. Goldner  
 Sydney R. and Adam T. Goodwin  
 So Yun and Michael Grace  
 Christie and Michael Greene  
 Elizabeth Spencer and Joseph Grenfell  
 Mary E. and Douglas D. Grieser  
 Judith M. and John D. Griffiths  
 Stephen Gutsell  
 Ryn and Bob Hahn  
 Joan and Jerry Hahn  
 Amanda and Jacob Hall  
 Peggy and Michael Hall  
 Kay Hegler and Ronald K. Hall  
 Vicki P. and John Hallett  
 Carey L. and Brian Hamilton  
 Marie K. Larchick and Arthur L. Haney  
 Margaret E. and John M. Hannam  
 Virginia and Randall Hansen  
 Milton L. Hanson  
 Sarah Newman and David F. Harding  
 Karen L. Harn  
 Herbert A. Hartman Jr.  
 Stephanie J. and Curtis W. Hartman  
 Maril and Bernard Hauber  
 Barbara J. Hauptman  
 Michael Hawkes  
 Michael T. Hayduska  
 Clarence E. Heaney Jr.  
 Rita Clark and Dorris R. Heaston  
 Karen and John P. Heil  
 Jaydee Worden and Timothy Held  
 Ardeth Henderson  
 Patti and Bob Herbolsheimer  
 Jean A. and C. Michael Hichborn  
 Bonnie J. Hickey  
 Kathryn and Jeffry Higgason  
 Denise Hill  
 Linda and Bill Hindmarsh  
 Kristen L. and Gary L. Hoffman  
 Sara and Mike Hoffman  
 Sharon R. Hofschire  
 Linda Holley  
 Molly M. Maguire and William C. Honke





Chef Gale Gand demonstrates a dessert during the On Track Guild's Coming Home for the Holidays Luncheon & Market



Crew members from the USS Omaha and the USS Nebraska go on a guided tour of the museum

24 PATRONS

Elizabeth A. and Donald C. Hosford Jr.  
 Deborah and Bruce Houghton  
 Linda and William J. Hughes  
 Ann M. Frame and James Hunter  
 Claire and William J. Hunter  
 Katie and Grant Hutchins  
 Catherine Ingalls  
 Diane and Larry Iske  
 Virginia and Dale Inglis  
 Ruth M. and Thomas Jamieson  
 Laura and Jeff Jay  
 Pamela R. and Mark L. Jensen  
 Mary Johansen  
 Keri and Nicholas Johns  
 Eileen A. Johnson  
 Kathy Kopocis and Linda K. Johnson  
 Nancy L. and Steve A. Johnson  
 Sylvia Jones  
 Vicki and Jeff Jung  
 Amanda and Daniel Kalin  
 Edie Kallemeyn  
 Patricia D. and Eugene F. Kathol  
 Vern Kathol  
 Dorothy J. and Tom L. Kazor  
 Sheri Bailey and Jeffrey F. Keane  
 Christine E. Nelson and Kurt A. Keeler  
 Charissa Wood and Mary E. Keitel  
 Tamara L. and John K. Kellams  
 Deborah A. and Doug Kelley  
 Denise E. Frost and Morgan P. Kelly  
 Karen and Howard Kennedy IV  
 Lawray A. and William P. Kinsella  
 Jeanne A. and Mark Klinker  
 Heidi and Joseph Kloeckner  
 Glenda K. Knowles  
 Sandra and Dan Koch  
 Sharon and David Kotok  
 Kenneth Krawczyk  
 Brenda J. and Dave Kreber  
 Myrna L. Krohn  
 Alicia and D. William Kroupa  
 Ashley and Kristopher Kuhn  
 Carol A. and Michael J. Lacroix  
 Debra J. and Riley Landolt  
 Amanda and Mark LaPuzza  
 Andrea Frazier and John S. Larsen  
 Gina and Jerry Lauritsen

Gerald G. Leahy  
 Julie A. and Joseph S. Lecci  
 Suzanne K. Scheller and Gordon Lee  
 Micayla and Philip K. Lee  
 Megan and Nathan Legband  
 Susan K. Wright and Andrew Leger  
 Stacy L. Lerner  
 Stacy Bradley and Gary V. Lewis  
 Steven Likes  
 Gretchen Lindner  
 Juli Logemann  
 Faith L. Louis  
 Linda H. and Robert W. Lovgren  
 Tillman L. Lowrey  
 Jeanne C. and David K. Lutz  
 Carol and Robert Lynch  
 Vyril L. Mackey Jr.  
 Natalie and Reed Macy  
 Heidi and Tom Macy  
 Lori and Ted Maine  
 Julie and Michael Maloney  
 Georgene Marks  
 Karen S. and Stanley A. Martin  
 Deborah J. Thomas P. Matthews  
 Grant Matthies  
 Mary M. Maxwell  
 Catherine and Marcus S. Maydew  
 Elizabeth and Robert Mazanec  
 Molly Egan and Richard McCaulley  
 Deborah W. and John S. McCollister  
 Pat and Stephen J. McCollister  
 Jennifer and Jeremy McDowell  
 Alysia and Michael McKenny  
 Susan T. and John W. McMannama  
 Suzanne M. McNamara  
 Sheila A. McNeill  
 Ruth and Gordon L. Meisgeier  
 Mariko Churchill and Chris Menefee  
 Sonya Stejskal and James Mercer  
 Elizabeth A. and Andrew Meyers  
 Mary and Gregory J. Mikuls  
 Thomas L. Miles  
 Estheruth C. and David M. Miller  
 Marian A. and Matthew J. Miller  
 Peggy J. and Gregory F. Mings  
 Mary E. and John W. Monson  
 Christine A. and Edward P. Montanez



Mary R. and James J. Montequin  
 Juanita Moore  
 Janis L. and Robert E. Moore, Jr.  
 Erin and Michael Moran  
 Sigrid and Michael T. Moylan  
 Rebecca T. and Douglas W. Murdock  
 Marilyn Fillingham and Georgia Murphy  
 Patricia and James Murray  
 Mary-Beth and Bruce Muskin  
 Dorene and Thomas Narofsky  
 Durba and Himanshu Nath  
 Karen R. and Larry S. Nelsen  
 Becky and Matt Nelson  
 Patricia M. and Mark R. Nelson  
 Janice B. and Scott M. Nelson  
 Cara and Ross Nesbitt  
 Charles J. Neumann  
 Diana Nevins  
 Sharee C. and Murray H. Newman  
 Mary R. and William R. Nordstrom  
 Laura L. LaMarr and Stuart Nottingham  
 Kerri and Ryan Nystrom  
 Sherri L. and John G. Obermiller  
 Renee L. O'Brien  
 Cathy J. Garrity and  
     Patrick S. O'Donnell  
 Rebecca and Joe O'Hanlon  
 Joan S. and Dean M. Olander  
 Treasure Baker and Karla Oliver  
 Ann and Richard F. Olney  
 Denise M. Olsen  
 Barbara A. and Mike R. O'Malley  
 Sandy and Michael S. O'Neal  
 Lynda and Peter Orbik  
 Marjorie I. O'Reilly  
 Brooke and Adrian Ossenkop  
 Jana Packard-Kruce  
 Lisa and Jacob Palmer  
 Sharon and Dale Parker  
 Jessica E. and Dennis E. Pate  
 Bijal and Rupal Patel  
 Melissa and Nicholas Payne  
 Racquel Pearson  
 Krista Wassenaar and Gary Pech  
 Susan M. and William C. Peel  
 Sarita M. and Wayne E. Penka  
 Katherine and Gregory Penny

Jean A. Ballinger and Ward Peters  
 Kenneth I. Petersen  
 Linda F. and Richard G. Petersen  
 Angie and Jimeal D. Phillips  
 Winifred J. and Lewis W. Pinch  
 Megan Heusinkvelt and Pam Poppens  
 Kathryn and Jeremiah Prater  
 Ann C. and Marshal A. Prewitt  
 Rita M. Price  
 Kathleen and William Purcell  
 Betty F. and James D. Quinn  
 Julie M. and R. Kent Radke  
 Paula E. Danker and David A. Randolph  
 Natalie and Charlotte A. Rannells  
 Barbara and Thomas Rasmussen  
 Michelle and BJ Ravnsborg  
 Linda and John Rebrovic  
 Sharla and James Reed  
 Cheryl K. and Ward H. Reesman III  
 Patricia Regan  
 Alicia Reil  
 Terrie and Bill Reisdorff  
 Colleen Conoley and Gregory Rhodes  
 Deanna and Carl Rhoten  
 Caroline E. and Harold A. Rice  
 Kristi A. Rutledge and Steven H. Rice  
 Theresa M. and Fred R. Rieser  
 Barb Haar-Rightmeyer and  
     Rodney Rightmeyer  
 Kelly and Thomas Riley  
 Sharon and Bob Rion  
 Victoria F. and the late  
     Edward B. Roche  
 Rosemarie M. Rogers  
 Ardis Roh  
 Debra J. Romberger  
 Catherine and Ernest L. Rongish  
 Cathy and James Rose  
 Genelle E. Rosenbaum  
 Margaret and Steven Rowley  
 Karuna and David Rubin  
 Mary R. and Carlos Rubio  
 Karen K. and Max J. Rudolph  
 Traci and Darby Runge  
 Carol and G. Richard Russell  
 Jennifer and Chad M. Rutar  
 Ronald Salak

Carol A. Sanderhoff  
 Toni and Todd Santoro  
 Nikola and Lazar Saric  
 Maria E. and Jeff E. Sauvageau  
 Cynthia Shuck and John M. Savage  
 Joyce M. and David R. Schaal  
 Meghan D. and Brian A. Schlattmann  
 Albertha C. and Patrick Schmid  
 Rick W. Schreiber  
 Diane and Joe Schwaller  
 Sheryl K. and Larry R. Scott  
 The Late James R. Scott-Miller  
 Gregory W. Searson  
 Marcia and Paul Seeling  
 Kathleen T. and Thomas W. Seidel  
 Diane and Lawrence F. Shackman  
 Vicki and Steven Shanahan  
 Suzanne M. and Bruce A. Sharp  
 John P. Sheehan  
 Sissy Silber  
 Teresa G. and Lonnie E. Shumate  
 Garrett and Elaine Sickmann  
 Carolyn E. and Richard H. Sieling  
 Marie A. and Lee G. Simmons  
 Cindy Smith & Associates  
 Tricia and Daniel J. Smith  
 Phyllis G. and Emmett Smith  
 Chrisenda and Mike Smith  
 Carol Suchy and Mike Smith  
 Sandra L. and Stanislaw G. Sojka  
 Jane and Michael T. Spires  
 Melissa and Gary A. Steiner  
 Lindsay J. Stephan  
 Jane and Joe Stessman  
 Jean I. Stewart  
 Mary Ann Strasheim  
 Mary Ann Sturek  
 Krysty B. and William S. Sudol  
 Joan and James W. Sullivan  
 Margaret and James Summerfelt  
 Kristin S. and Roger L. Swenson  
 Cathy and Tony Tauke  
 Marla J. Norton and Alain J. TAYLON  
 Bonnie L. and Eldon J. Terrell  
 Dolores and Kevin G. Terwey  
 Carol L. and Edward W. Thomas  
 Carol M. and Tom S. Thomas

Jacqueline and James Tischer  
 Carla and David M. Toczek  
 Emily J. Tonniges  
 Lisa Whelan and Rich Triptow  
 Sarah F. Ginn and Dan Trombla  
 Suz A. and Steven M. Trusty  
 Dorothy and Dean J. Tuma  
 Emily and Patrick Turner  
 Wendy M. and Mark C. Tvrdy  
 Bridget A. and Fred J. Uhe  
 Alvera A. and Roman H. Uhing  
 Margaret Vaca  
 Carol A. and Raymond G. Valente  
 Guneet and Eric Van De Graaff  
 Betty Vandenberg  
 Gail and Irving Veitzer  
 Mary Lee and Michael C. Villanueva  
 Julie L. and Ron V. Von Rentzell  
 Sheryl A. and Craig Walker  
 Chris A. Walsh  
 Vicki L. Wampler  
 Dian J. and the late James T. Warren  
 Gayle Smith and Bryan Watkins  
 Sarah Watson  
 Leann A. and Andrew W. Watts  
 Dana and David Wear  
 Amy Rapp and Susan J. Weekly  
 Cristal Hoffman and Misty West  
 Connie K. and Kent Wichman  
 Jan Rowley and Rob Williamson  
 Jennifer H. and Brian A. Wilson  
 Julia and Mark C. Wilson  
 Beth and Tim Wilson  
 Traci and Andrew Winkler  
 Ginny and Joe Wojtkiewicz  
 Patricia K. and William A. Wollenhaupt  
 Carol D. Wood  
 Lori L. Peters Woodruff and  
     John A. Woodruff  
 Jean L. Wreschnig  
 Dorothy L. and Dennis A. Young  
 Theresa J. and George L. Young  
 Sandy and Mike Zabawa  
 Molly and Ryan Zabrowski  
 Anna and Jeovany Zelaya  
 Sarah and Peter Zoucha



# PROGRAM SUPPORTERS

The museum's exhibitions, education programs and events are made possible thanks to the interest and involvement of our generous sponsors and underwriters. We wish to thank these organizations and individuals for their support in making these extraordinary opportunities possible.



Anonymous  
Attitude on Food  
The Baer Foundation  
Clifton B. and Anne Stuart  
Batchelder Foundation  
Susan B. Beeghly  
John K. and Lynne D. Boyer  
Family Foundation  
Children's Hospital & Medical Center  
Clark Security  
Conagra Brands Foundation  
Cox Communications  
A. Cydog Charitable Trust  
D.A. Davidson  
Robert B. Daugherty Foundation  
D.F. Dillon Foundation  
Dixon Family Foundation  
Douglas County, Nebraska  
Downtown Omaha, Inc.  
Debby Durham Family Foundation  
Steven H. Durham Family  
Charitable Foundation  
Sunny Durham Family Foundation  
Farm Credit Services of America  
FNBO  
Amy and Todd Foje  
Carol Gendler  
Greater Omaha Chamber of Commerce  
The late Grace E. Hansen  
The Hawks Foundation  
HDR  
Gilbert M. & Martha H.  
Hitchcock Foundation  
The Holland Foundation  
HomeLight  
Humanities Nebraska  
Institute for Museum and Library Services  
Iowa West Foundation  
Jean F. and Lee K. Johnson  
Robert F. Kathol  
Kiewit Companies Foundation  
Peter Kiewit Foundation

Kacey and Joe Lempka  
Lincoln Financial Foundation  
The Lozier Foundation  
Mammel Foundation  
Mangelsen's  
Metropolitan Community College  
Metropolitan Utilities District  
Mutual of Omaha  
Shirley J. and Daniel P. Neary  
Nebraska Department of  
Economic Development  
Nebraska Tourism Commission  
Nebraska State Education Association  
City of Omaha  
Omaha Public Power District  
Omaha Public Schools Foundation  
On Track Guild  
Oriental Trading Company  
Rita and Donald Otis  
Dorothy and Rolland Otis Family Fund  
Parker Family Foundation  
Patterson Family Foundation  
Pinnacle Bank  
Richard Brooke Foundation  
Kathi and Louis J. Rotella Jr.  
Ruth and J. William Scott  
Amy L. Scott Family Foundation  
Raleigh Sheffield  
The Sherwood Foundation  
Betiana and Todd Simon  
Robert H. Storz Foundation  
Willis and Janet Strauss Fund  
U.S. Bank  
Union Pacific Foundation  
Union Pacific Corporation  
United Rentals  
University of Nebraska Medical Center  
Valmont Industries, Inc.  
Verhalen Family Foundation  
Whitmore Charitable Trust  
Frank Willkie  
Young Family Foundation



# 2022 GIFTS

## ANNUAL FUND CONTRIBUTIONS

### GIFTS OF \$1,000+

Anonymous  
Backer Family Charitable Trust  
Bluestem Prairie Foundation  
Beth H. Eliason  
Amy and Todd Foje  
Julie C. and Lance Fritz  
Kenneth L. Kessler  
Lindsay Corporation  
Nancy and Michael R. McCarthy  
Julie Morsman Schroeder Foundation  
Gerianne and Joseph O'Connor  
Kathryn and Joseph E. O'Connor Jr.  
Patch Fund at The Chicago  
Community Foundation  
Margaret and John H. Rebensdorf  
Shirley Rundquist  
Jennifer and Jeff Snow  
Vance F. Taylor  
Nancy C. and John W. Webster  
Margery and Stephan Woodman

### GIFTS FROM \$500-\$999

Anonymous  
Lynne D. and John K. Boyer  
Rkachea and Bruce Carpenter  
Kimara J. and Kevin S. Clark  
Janette and Kevin Garvin  
Carol R. and David L. Johnson  
Bonnie and Richard Kolowski  
Krista and Jeff McDonald  
Dorothy M. and Daniel L. McKinney  
Joan R. and William C. Truhlsen

### GIFTS FROM \$100-\$499

Cheera Hubbard and Tracy J. Abdouch  
Kay C. and the late Marvin D. Andersen  
Mary Anna and Clyde L. Anderson  
Jeanee Weiss and Eric Baptiste  
Claire Brooks  
Susan M. Brown  
Vickie and Dennis Brummer  
Lynne M. Buchanan  
Dianne G. and Keith N. Bystrom  
Jeanette E. and Harold L. Capps  
Phyllis A. Carlson  
Nora A. and Fred M. Clingman  
Arlene and Paul G. Cohen  
Lynn G. Danielson  
Mary C. and Thomas Dobleman  
Mary Lou Durbin-Stehr  
Deborah K. and Gary Elliott  
Anne and Donald Eppley  
Julie and Marc D. Ernest  
Barbara J. and Robert B. Etzel  
Donna K. and Richard G. Farlow  
Virginia and James Fay  
Marilynne Felderman  
Susan and Douglas Fleetwood  
Marilee E. and John W. Garrison  
Diana Gleisberg Meredith  
Polly J. Goecke  
Mary A. and Gary C. Grimes  
Kathlyn and R. Michael Gross  
Geraldine M. Harrington  
Michael T. Hayduska  
Carol Houchin  
Barbara and Christopher L. Ihle  
Carla M. Imray  
Kim Jansen  
Christi A. and Thomas C. Janssen

Patti W. and David L. Jareo  
Thomas Jaworski  
David W. Johnson Sr  
Erin K. and Bruce J. Kampsnider  
Brenda and Brian D. Kenny  
Amy J. and Bradley L. Knuth  
Carol and Robert Lynch  
Pam and John J. Marchant  
Janella Matter  
Carolyn A. and G.W. McDonald  
Kelly McDonald  
Michael G. McDonald  
Thomas L. Miles  
Karen and Paul Mullen  
Stacy L. and Chris C. Neil  
Peggy and David L. Noyes  
Peg and Patrick O'Malley  
Carol Pope  
Henry Posner  
Jennifer Pospichal  
Catherine and Ernest L. Rongish  
Lorraine M. and Matthew V. Rusch  
Ronald Salak  
Jerada and William J. Schlueter  
Mary M. and Bill Schwanz  
Margaret and Rick Scofield  
Pamela C. and Gregory S. Sears  
Kathleen T. and Thomas W. Seidel  
Sissy Silber  
Marie A. and Lee G. Simmons  
Mary Jo R. and Leo W. Smith II  
Ralph A. Swinarski  
Teri A. and Stanley L. Teutsch  
Susan R. and James M. Tracy  
Virginia Tworek  
Amy Rapp and Susan J. Weekly  
Lois L. Westfall  
Catherine M. and Thomas L. Wilkinson  
Lynn R. Williams

Ginny and Joe Wojtkiewicz  
Martha R. and Thomas T. Wyman  
Michael Zack

### GIFTS FROM \$50-\$99

Jean C. and Robert C. Allen  
Helen E. and Melvin N. Allen  
Marta and Rich G. Balash  
Denise A. and Martin J. Barche  
Ellen L. and Roger H. Baumgart  
Gail and Jim Binderup  
Patricia L. and David K. Bruening  
Carol and Mike H. Catherall  
Beth and Chuck Chevalier  
Arnel B. Citurs  
Mary M. Cooney  
Katherine Simmons and Alistair Cullum  
Lana M. Danielson  
Carolyn and Robert L. Davis  
Kathleen J. and Virgil A. Dirks  
Thomas L. Dwyer Jr.  
Debbie and John M. Eckels  
Melissa Hagerty and Sherry J. Fletcher  
Joan J. Goldapp  
Sydney R. and Adam T. Goodwin  
Nancy J. Grant  
Ryn and Bob Hahn  
Mary Jo Havlicek  
Ardeth Henderson  
Patti and Bob Herbolsheimer  
Penny L. and Robert P. Jacober  
Paula and Alan Jensen  
Kathy Kopocis and Linda K. Johnson  
Alison Keefe  
Anne P. and Jerry H. Kotlik  
Victoria and David A. Krecek  
Anne C. and T. Geoffrey Lieben  
Lou E. and Dan Love  
Bruce McCaffrey



Nathan Medcalf  
 Sonya Stejskal and James Mercer  
 Sharron Milota  
 James D. Moenssen  
 Melinda L. and Dennis M. Moenssen  
 DeAnn Olsen  
 Christine and Gerard Ortner  
 Dianne L. and Terrence L. Pankowski  
 Jane and Christopher D. Phillips  
 Rita M. Price  
 Barbara and Thomas Rasmussen  
 Liz and Roger Rea  
 Cassy and Ryan Richards  
 Rosemarie M. Rogers  
 Debra J. Romberger  
 Elizabeth M. Durham-Ruiz and  
 Richard Ruiz  
 Mari Petersen and James T. Ruswick  
 Kristi A. Rutledge and Steven H. Rice  
 Michael J. Scherr  
 Chrisenda and Mike Smith  
 Gloria J. Sorensen  
 David Sutherland  
 Ann C. Thomsen  
 Sue L. and Tom Weidner  
 Bonnie J. White  
 Kendra McGinnis and Owen Wilhelms  
 Ashley and Corey J. Wilson

## **MATCHING GIFTS CORPORATE MATCHING AND MEMBERSHIP SUBSIDY GIFTS**

Blue Cross & Blue Shield of Nebraska  
 D.A. Davidson  
 DLR Group  
 Farm Credit Services of America  
 HDR  
 Kiewit Companies Foundation  
 McGill Restoration, Inc.  
 Metropolitan Utilities District  
 Mutual of Omaha  
 U.S. Bank

## **TRIBUTE AND MEMORIAL GIFTS**

*In Memory of Gordon M. Doeschot*  
 Jeanette E. and Harold L. Capps  
*In Honor of Liz Crosson*  
 Joy and Dennis Esterbrooks  
*In Memory of Chuck Haller*  
 David W. Johnson Sr.  
*In Memory of Ruth A. Sage*  
 Jeanette E. and Harold L. Capps  
*In Memory of Tommie D. Thompson*  
 Christi A. and Thomas C. Janssen  
 Amy J. and Bradley L. Knuth  
 Ashley and Corey J. Wilson  
*In Memory of Stanley M. Truhlsen*  
 Lynne D. and John K. Boyer  
*In Memory of Jim Wrinn*  
 Christi A. and Thomas C. Janssen  
 Jane and Christopher D. Phillips  
 Henry Posner

## **BRICK-BY-BRICK CAMPAIGN**

Roslyn and Ernest Bennett  
 Trisha and Tommy J. Cerone  
 Vicki P. and John Hallett  
 Darcy Haslam  
 Joni and Joe M. Vazzano  
 Michael Wichert  
 Valerie Yingling

## **DURHAM JUNCTION SPONSORS**

Jessica L. and Brent Brummer  
 Beth H. Eliason  
 Julie and Marc D. Ernest  
 Diane and Harlan O. Falk  
 Kathy and Gary Gates  
 Mary Ann and Waldon L. Johnson  
 Audrey A. and Paul M. Paulman  
 Christine K. and Brian Reilly  
 Mary Jo R. and Leo W. Smith II  
 Stacy L. and Ronald E. Stohlmann  
 Janice A. and Thomas C. Wilson

## **SENTIMENTAL JOURNEY GIFTS SPONSORS AND UNDERWRITERS**

Alley Poyner Macchietto Architecture  
 Shirley A. and James O. Armitage  
 Cindy M. and Mogens C. Bay  
 The Bekins Foundation  
 John K. and Lynne D. Boyer  
 Family Foundation  
 Beverly A. and Edward L. Burchfield  
 Karla and Scott Cassels  
 D.A. Davidson  
 Trish and Richard K. Davidson  
 Michael G. Fahey  
 Farm Credit Services of America  
 FNBO  
 Gallup, Inc.  
 Kathy and Gary Gates  
 Carmen and John E. Gottschalk  
 Deryl F. Hamann  
 Joan Squires and Daniel A. Hamann  
 Hancock & Dana P.C.  
 HDR  
 Kim and Tim Henze  
 Heritage Omaha  
 Claire M Hubbard Foundation  
 Sheri B. and Steven A. Idelman  
 Christi A. and Thomas C. Janssen  
 Kiewit  
 Amy J. and Bradley L. Knuth  
 Stephanie F. and John J. Koraleski  
 Wende and John F. Kotouc  
 Kimberly A. and Scott A. Leinen  
 Annalaura and George A. Little  
 Mary and Rodrigo Lopez  
 Mammel Foundation  
 Amy M. Haddad and Steven S. Martin  
 McCarthy Capital Corporation  
 Sigrid and Michael T. Moylan  
 Mutual of Omaha  
 Nebraska Medicine  
 Omaha Public Power District  
 Audrey A. and Paul M. Paulman  
 Cassandra J. and Gary A. Pietrok  
 Pinnacle Bank  
 Mary and Matt Reckmeyer

Stacie and Robert A. Reed Jr.  
 Renze Display Company  
 Cindy and Robert W. Rieke  
 Carol and G. Richard Russell  
 Constance Ryan  
 Security National Bank of Omaha  
 Cindy Smith & Associates  
 Mary Jo R. and Leo W. Smith II  
 Mary and Leonard M. Sommer  
 Sparkling Klean Inc.  
 Ann M. and Kenneth E. Stinson  
 Tenaska, Inc.  
 Joan R. and William C. Truhlsen  
 Union Pacific Corporation  
 University of Nebraska Medical Center  
 Valmont Industries, Inc.  
 Dian J. and the late James T. Warren  
 Nancy C. and John W. Webster  
 Wiesman Development Corporation  
 Ashley and Corey Wilson  
 Mary A. and John K. Wilson  
 Nancy L. and Philip M. Wolf

## **SENTIMENTAL JOURNEY: STUFF THE BUS CAMPAIGN**

Anonymous  
 Scott A. Andersen  
 Helen North and Ken Bayles  
 Teresa and Scott Binder  
 Lynne D. and John K. Boyer  
 Michael Brooks  
 Beverly A. and Edward L. Burchfield  
 Stephanie and Howard Daubert  
 Carolyn M. and David A. Diamond  
 Janet and Rodney Doerr  
 Jean M. Ehrenberg  
 Jim Harter  
 Christi A. and Thomas C. Janssen  
 Camille and Mark Jensen  
 Karen and Ken Keegan  
 Amy J. and Bradley L. Knuth  
 Robyn and Jim Kortan  
 Kacey and Joe Lempka  
 Ceclia London



The late Anne E. and John P. Nelson  
 Suzanne and Joseph Nuss  
 Lisa A. and Stephen G. Olson II  
 Eleanor and Charles O'Reilly  
 Audrey A. and Paul M. Paulman  
 Mary and Matt Reckmeyer  
 Susan and David Sheehy  
 Melissa and Robb Steffes  
 Beverly Kracher and Jerry Stegeman  
 Sarah Jo Wareham  
 Ada Wilson

## ON TRACK GUILD "HOME FOR THE HOLIDAYS" SPONSORS AND CONTRIBUTORS

Jennifer Alloway  
 Beth Asbjornson-McCashland  
 Kimberly Banat  
 Dawn B. and Douglas J. Buchanan  
 Beverly A. and Edward L. Burchfield  
 Centris Federal Credit Union  
 Elizabeth Crosson  
 Laura C. Doll  
 Margaret Evans  
 Frankel Zacharia  
 Lou Ann Goding  
 Kate Grabill  
 Kathlyn Gross  
 Shelly Grote  
 HDR  
 Eleanor Hohman  
 John L. Hoich  
 Marla Irish  
 Christi A. Janssen  
 Lindi Janulewicz  
 Jeanie Jones  
 Kiewit  
 Sandra and Dan Koch  
 Wende and John F. Kotouc  
 Suzanne Kotula  
 Amanda LaPuzza  
 Lindsay Corporation  
 Jane Machado  
 Matt Jetter Medicare  
 Insurance Solutions

Momenta Pain Care  
 Karen R. Nelsen  
 Diane C. Nelson  
 Christie Oberto  
 Carla Patton-Ochsner  
 Pinnacle Bank  
 Sandra K. Price  
 Susanne Shore  
 Mary Jo R. and Leo W. Smith II  
 Sally Stalnaker  
 Jane and Joe Stessman  
 Ann M. Stinson  
 Dolores Terwey  
 Sherry Thompson  
 Jane Werner  
 Corey Wilson  
 Gail W. Yanney

## IN-KIND CONTRIBUTIONS

A Hill of Beans  
 The Amazing Pizza Machine  
 Attitude on Food  
 Beercade  
 Bellevue Berry Farm  
 Big Mama's Kitchen  
 Big Fred's Pizza  
 Brickway Brewery and Distillery  
 Bronco's  
 Kathy Callahan Mrla  
 Canoyer Garden Center  
 The Cheesecake Factory  
 Chocolaterie Stam  
 Chop's Bowling  
 Clark International, Inc.  
 Coneflower Creamery  
 Liz Crosson  
 Custom Gems  
 Dave & Buster's  
 Tracy Diehl Events  
 DH Pace  
 Duke Aerial Equipment  
 Elman Print  
 Michelle C. Gandy  
 Green Beans Coffee  
 Hardy Coffee Co.  
 Amy Henderson

Hiland Dairy  
 Jake's Cigar Bar  
 Anne Jetter  
 Joslyn Art Museum  
 Valerie A. Kelly  
 Lakeshore Learning  
 Lazlo's Brewery & Grill  
 MacRae Productions  
 Mangelsen's  
 Karen R. Nelsen  
 Sheila A. Nelson  
 Omaha Performing Arts  
 Omaha Police Department  
 Omaha Public Power District  
 Oriental Trading Company  
 Papio Bowl  
 The Peregrine  
 Rachel J. Events  
 The Rose Theater  
 The Tea Smith  
 Ted & Wally's Ice Cream  
 Terry Hughes Tree Service  
 Union Pacific Corporation  
 United Rent-All  
 UNO - Athletic Department  
 Upstream Brewing Company  
 Vala's Pumpkin Patch  
 Von Maur

## COLLECTION DONATIONS

Anonymous  
 John Anderson  
 Heidi Barr,  
 In Memory of Maynard Telpner  
 John Brian Beilman  
 Christina Berliaw  
 The Kuzelka and Budka Families  
 Gary E. and Antoinette Cook  
 The Gallagher Family  
 The Golla Family  
 James Ducey  
 Jim and Jan Elbling  
 The Family of Harold E. Flury  
 Karen Foster  
 Nancy Friedemann-Sanchez  
 The Glenn Family

Vicki and John Hallett  
 The Heineman Family  
 William M. Hurley  
 Darlene Hovendick Jensen  
 Paige Kallsen  
 Maria Anderson Knudtson  
 Paul Kollee  
 Phyllis Lueninghoener  
 Loren and Linda Meyer  
 Sophie Newell  
 Ariel Panowicz  
 The Pettis Family  
 Mark Schoenbaum  
 The Siepelmeier Family,  
 In Loving Memory of  
 Duff and Margaret Green  
 The Robert Krug Shukert Family  
 The Sinderson Family,  
 In Memory of Warren (Sindy)  
 Sinderson  
 In Memory of Bruce E. Thornblad  
 The John S. Thomas Family  
 Bernie and Patricia Waschinek  
 and Family  
 Kathleen West Spencer and David West  
 Yellowstone Gateway Museum of  
 Park County



# 2022 FINANCIAL STATEMENT

The Durham Museum and The Durham Museum Foundation  
Combined Statements of Financial Position

## Financial Position

	2022	2021
<b>Assets</b>		
Cash and cash equivalents <sup>A</sup>	\$4,973,321	\$5,268,272
Investments <sup>B</sup>	17,309,769	19,791,587
Receivables	60,886	19,465
Contributions receivable <sup>C</sup>	772,419	932,392
Other Receivable - Employee Retention Tax Credit	-	298,049
Accrued interest	155,653	140,411
Inventory	54,241	48,907
Prepaid expenses	243,516	250,560
Property and equipment, net	7,267,193	7,257,358
<b>Total Assets</b>	<b>\$30,836,998</b>	<b>\$34,007,001</b>
<b>Liabilities &amp; Net Assets</b>		
Liabilities:		
Accounts payable and accrued expenses	\$646,721	\$770,328
<b>Total Liabilities</b>	<b>\$646,721</b>	<b>\$770,328</b>
Net Assets:		
Unrestricted	\$11,243,777	\$12,147,628
Temporarily restricted	3,673,545	5,743,162
Permanently restricted	15,272,955	15,345,883
<b>Total Net Assets</b>	<b>\$30,190,277</b>	<b>\$33,236,673</b>
<b>Total Liabilities &amp; Net Assets</b>	<b>\$30,836,998</b>	<b>\$34,007,001</b>

(A) Cash and cash equivalents include \$1,673,051 and \$1,826,178 in 2022 and 2021, respectively, which is restricted with donor stipulations that limit the use of the funds.

(B) Investments include \$15,272,955 and \$15,345,883 in 2022 and 2021, which have donor restrictions that require the funds to be maintained permanently but permit use of income earned from the investments.

(C) Contributions receivable include \$807,500 and \$915,000 in 2022 and 2021, respectively, which is restricted with donor stipulations that limit the use of the funds.





# WAYS TO GIVE

Each year, gifts from supporters like you help us sustain the key activities of the museum, from maintaining historic Union Station to presenting exhibitions and education programs that bring the world to Omaha. We invite you to invest in these efforts by supporting the museum's mission in the following ways:

## ANNUAL MEMBERSHIP

Members enjoy free general admission and other benefits, while their support provides year-round operating funds for the museum. Many tiers are available, including Individual, Family and Patron to fit the interest of every member.

## THE DURHAM SOCIETY

Members of the Durham Society share a philanthropic vision for the museum and its service to the community. Contribution levels include the Heritage Circle (\$25,000), Founder (\$5,000) and Member (\$1,000) and are fully tax-deductible. The funds are distributed as directed by the Board of Directors and are used to strengthen museum operations and to secure, present and enhance future exhibitions and educational opportunities.

## SPONSORSHIP/ UNDERWRITING

Sponsorship and underwriting opportunities enable our corporate, foundation and individual supporters to demonstrate their interest and passion in the museum's many exciting exhibitions, education programs, preservation initiatives and event opportunities made available to the community.

## ANNUAL FUND

Separate from memberships, the Annual Fund strengthens departments, programs and projects within the museum by bridging the gap between our membership and admission revenue and the costs involved in operating this vital community institution. You may also choose to honor or memorialize a friend or loved one with a direct gift to the museum, commissioning a brick in our permanent exhibition galleries or sponsoring a piece of our model railroad.

## PLANNED GIFTS

You are invited to leave a personal legacy by including The Durham Museum in your planned giving strategy. By including the organization in your estate plans, you will help to sustain Union Station, The Durham Museum and its collections for generations to come. For more information on giving options, please contact the museum at 402-444-5071.



# THE DURHAM MUSEUM



801 SOUTH 10TH ST. OMAHA, NE 68108  
402-444-5071 • [DURHAMMUSEUM.ORG](http://DURHAMMUSEUM.ORG)