

# TEACHERS' NIGHT WEEK 2020

## Resource Guide

Thank you to our 2020 Teachers' Week Sponsors



Dear Educators,

This year has been one of constant change and realignment, and Teachers' Night 2020 was no exception. Teachers' Night is a long-standing tradition at The Durham Museum and for teachers across the community. The ongoing pandemic threatened to cancel this year's event. Instead, we challenged ourselves to consider how to not only safely hold the 17<sup>th</sup> Annual Teachers' Night, but to expand the event into a full week of offerings. We could not have done this without the support and participation of the organizations listed in this resource guide and many other across the Omaha metro.

In particular, we want to thank the organizations who served on our advisory committee, including Omaha Public Schools, Tri-Faith Initiative, Inclusive Communities, and UNMC. They provided valuable input in order to form the panels for our virtual workshops and the exhibitors who would attend the in-person event. Thanks to this committee, we were able to engage with new community partners and experts who could provide valuable insight to teachers during this unprecedented time in education.

The 17<sup>th</sup> Annual Teachers' Night looked quite different from past years, including a one-way path through the exhibitor tables, refreshments, raffles, and museum exhibits, plus a sneak peek at *The Jim Henson Exhibition: Imagination Unlimited*. The result was a successful event that included a total attendance of approximately 200 guests, all of whom reported sincere appreciation for the decision to pursue hosting the event, but also the opportunity for meaningful conversations with exhibitors along the one-way path. The exhibitors also reported the positive impact of the timed tickets and one-way path, noting that they were able to connect with more teachers than ever before.

We certainly look forward to next year's event, whatever it may look like, but plan to continue in the expanded "Teachers' Week" format, adding additional opportunities for shared resources and appreciation of the education community. In the meantime, we hope you find this a helpful resource guide. It is comprised of submissions from the many organizations who have supported Teachers' Night in the past, many of whom were still able to attend or offer resources this year.

Last but not least, thank YOU for your support of this program and for everything you've done and continue to do for our community. We're here for you and we look forward to welcoming you and your students back to the museum as soon as it's safe to do so. Until then, we will "see" you virtually!

Sincerely,

*Abby Jung*

Abby Jung  
Director of Education Services  
The Durham Museum

## Table of Contents

<b>Organization</b>	<b>Page Number</b>
211 Helpline (United Way of the Midlands)	4
DIBS (Delivering Infinite Book Shelves) for Kids	4
The Durham Museum	5
Film Streams	5
Great Plains Black History Museum	6
Historic General Dodge House	6
Humanities Nebraska	7
iXCEL, University of Nebraska Medical Center	7
Institute for Holocaust Education	8
Keep Omaha Beautiful	8
Lauritzen Gardens	9
Mormon Trail Center at Winter Quarters	9
MRB Lewis and Clark Visitor Center	10
Nebraska Association for the Education of Young Children	10
Nebraska Humane Society	11
Nebraska Library Commission	11
Omaha Public Library	12
Omaha Symphony	12
Omaha's Henry Doorly Zoo & Aquarium	13
Oxbow Writing Project- University of Nebraska at Omaha	13
Sarpy County Museum	14
The Rose Theater	14
Union Pacific Railroad Museum	15
University of Nebraska State Museum	15



Get Connected. Get Help.™

[www.unitedwaymidlands.org/2-1-1/](http://www.unitedwaymidlands.org/2-1-1/)

2-1-1 is a free, confidential information and referral helpline. Callers are referred to health and human service and non-profit agencies in their communities. Referrals include but are not limited to food pantries, financial assistance for rent or utility bills, community clinics, housing, transportation, etc. 2-1-1 has a live specialist answering calls 24/7. Assistance is available in over 100 languages through bilingual staff and tele-interpreter service.

### Contact Information

Fratina McCraney

402-997-7003

[fmccraney@uwmidlands.org](mailto:fmccraney@uwmidlands.org)



[www.dibsforkids.org](http://www.dibsforkids.org)

DIBS for Kids is a 501(c)(3) nonprofit based in Omaha, NE that supports teachers in K-3rd grade classrooms to send home on average 80+ books per student, per school year. We offer teachers and schools three key supports to make daily book distribution easy and fun.

1. Fundraising, High Interest Books, & Materials
2. Web-Based Book Distribution Software
3. Individualized Support

### Contact Information

Marie Kovar, Ed.S.

402-980-6036

[marie@dibsforkids.org](mailto:marie@dibsforkids.org)



[www.durhammuseum.org](http://www.durhammuseum.org)

The Durham Museum's award-winning digital learning program offers unique opportunities to learners of all ages. Taught by museum educators, these engaging and interactive classes following national and state Social Studies standards and feature artifacts, photographs, and a live look at the museum's exhibitions and displays.

**Contact Information**

Paige Pace

402-444-5027

[education@durhammuseum.org](mailto:education@durhammuseum.org)



[www.filmstreams.org/daytime-education-program](http://www.filmstreams.org/daytime-education-program)

Film Streams is uploading monthly thematic videos to our YouTube channel that can exist in curricula. Along with these videos, educators can access further resources like transcripts, discussion questions, and further viewing recs. We also offer virtual meetings with our Education Coordinator to discuss film.

**Contact Information**

Paul Sanchez

531-466-2897

[paul@filmstreams.org](mailto:paul@filmstreams.org)



Preserving...Celebrating...Educating...

[www.gpblackhistorymuseum.org/](http://www.gpblackhistorymuseum.org/)

The Great Plains Black History Museum provide 1-hour face to face tours , virtual tours and presentations to K-12 students based on American History told through the lens of African Americans.

### **Contact Information**

Eric L. Ewing

402-932-7077

[ericewing.gpbhm@gmail.com](mailto:ericewing.gpbhm@gmail.com)



[www.dodgehouse.org](http://www.dodgehouse.org)

The Historic General Dodge House offers tours for elementary, junior high and high school students with age-appropriate material. Students will learn about life in Council Bluffs during the last quarter of the 19th century and about Council Bluffs' most famous citizen, General Dodge.

### **Contact Information**

Michelle Hrdlicka

712-322-2406

[michellehrdlicka@dodgehouse.org](mailto:michellehrdlicka@dodgehouse.org)



## HUMANITIES NEBRASKA

[www.humanitiesnebraska.org](http://www.humanitiesnebraska.org)

Humanities Nebraska has Prime Time reading programs for at-risk families, a free high school civics curriculum from Brown University called Capitol Forum on America's Future, and a Speakers Bureau covering everything from Nebraska history to writing workshops.

### Contact Information

Kristi Hayek Carley

402-474-2131 ext. 108

[kristi@humanitiesnebraska.org](mailto:kristi@humanitiesnebraska.org)



UNMC<sup>SM</sup>

iEXCEL

[www.unmc.edu/iexcel](http://www.unmc.edu/iexcel)

The iEXCEL program offers asynchronous learning resources for K-12 and pre-health, collateral, online and in-class resources for STEM teachers of all levels. Available to present in-class and virtually about health professions careers, STEM & content creation.

### Contact Information

Alex Erlandson

402-559-2446

[Alex.erlandson@unmc.edu](mailto:Alex.erlandson@unmc.edu)



[www.ihene.org](http://www.ihene.org)

IHE provides educational resources, workshops, survivor testimony, speakers, and integrated programming to students, teachers, and the public. We have middle and high school programs in addition to individual support for teachers and students, grades 5-12, in art, music, English, and social studies.

**Contact Information**

Kael Sagheer  
402-334-6453  
[ksagheer@ihene.org](mailto:ksagheer@ihene.org)



[www.keepomahabeautiful.org](http://www.keepomahabeautiful.org)

Keep Omaha Beautiful offers environment education resource checkout kits, free virtual and in-person outreach to classrooms, and service-learning opportunities.

**Contact Information**

Hannah Rennard- Ganley  
402-546-3610  
[hannah.rennard-ganley@cityofomaha.org](mailto:hannah.rennard-ganley@cityofomaha.org)





[www.lauritzengardens.org](http://www.lauritzengardens.org)

Lauritzen Gardens offers free guided or self-guide field trips for K-12 students. This includes bus reimbursement and no garden admission for staff/students. They also offer virtual field trips to the most popular gardens, including a video, accompanying lesson plans, and materials to be checked out. Garden on the Go Trunks include complete lesson plans and the majority of materials to teach full units on topics like pollination and plant adaptations. Stay tuned for an update as well as more information on upcoming Zoom/Microsoft Teams programming and classroom outreach.

#### **Contact Information**

Kate Schwarz

402-346-4002 ext. 253

[k.schwarz@omahabotanicalgardens.org](mailto:k.schwarz@omahabotanicalgardens.org)



<https://history.churchofjesuschrist.org/subsection/nebraska/omaha/mormon-trails-center-at-winter-quarters>

The Mormon Trail Center at Winter Quarters is a visitors' center with exhibits about Winter Quarters, a major settlement for Latter-day Saint pioneers after they left Nauvoo, Illinois. The exhibits describe the Latter-day Saints' westward migration to the Salt Lake Valley in Utah by wagon, handcart, sailing ship, and train. Next to the trail center are the Mormon Pioneer Cemetery and the Winter Quarters Nebraska Temple.

#### **Contact Information**

Shannon Deets

402-453-9372

[trailcenterschedule@gmail.com](mailto:trailcenterschedule@gmail.com)



[www.lewisandclarkvisitorcenter.org](http://www.lewisandclarkvisitorcenter.org)

The Lewis and Clark Visitor Center offers a teacher's packet of suggested activities for Lewis & Clark studies. It includes a short syllabus, a one-page summary of the Lewis & Clark Expedition, maps of their route, a description of Sacagawea, an Adventures of Seaman pamphlet, a glossary of words from Lewis & Clark's journals, a description of our center, a sample itinerary for a field trip of our center and 80-acre property, and a scavenger hunt questions (and answers) on our property.

**Contact Information**

Doug Friedli  
402-874-9900  
[dougfriedli@gmail.com](mailto:dougfriedli@gmail.com)



Nebraska Association for the  
Education of Young Children

[www.nebraskaaeyc.org](http://www.nebraskaaeyc.org)

The goal of The Nebraska Association for the Education of Young Children (NEAEYC) is to strengthen and support the early childhood community. NEAEYC provides a variety of projects and services including T.E.A.C.H. Early Childhood® and Child Care WAGE\$®. We support high quality care and education for young children through professional development activities, advocating for issues, and serving as a resource for local affiliates who work with young children.

**Contact Information**

Melanie Cordry  
402-858-2965  
[mcordry@nebraskaaeyc.org](mailto:mcordry@nebraskaaeyc.org)



[www.nehumanesociety.org](http://www.nehumanesociety.org)

At the Nebraska Humane Society, our goal is to prepare the next generation of animal advocates through a variety of offerings for school-aged youth, including school/group tours, summer camps, educational presentations, Humane Hands, birthday parties, and scout programming.

**Contact Information**

Tammy Conroy  
402-444-7800 ext. 2214  
[tconroy@nehumanesociety.org](mailto:tconroy@nehumanesociety.org)



[www.nebraskaccess.nebraska.gov](http://www.nebraskaccess.nebraska.gov)

The Nebraska Library Commission is a state agency that provides information resources to Nebraska teachers, students, and residents through our NebraskAccess and Nebraska Memories programs. NebraskAccess features databases that include full-text journal articles, plus an encyclopedia. Nebraska Memories contains digitized historical materials.

**Contact Information**

Allana Novotny or Susan Knisely  
402-471-2045  
[nlc.nebraskaccess@nebraska.gov](mailto:nlc.nebraskaccess@nebraska.gov)



**Omaha  
Public  
Library**

[www.omahalibrary.org](http://www.omahalibrary.org)

Omaha Public Library has helpful tools and information for teachers, parents, and homeschooling families. This includes digital resources like eBooks, reference databases, and downloadable music; physical resources such as book club bags, books and audiobooks, DVDs; language learning and literacy resources, Nebraska history resources, and a special Educator Business Account library card.

**Contact Information**

Omaha Public Library  
402-444-4800



**OMAHA  
SYMPHONY**

[www.omahasymphony.org/teachers-students](http://www.omahasymphony.org/teachers-students)

The Omaha Symphony is generating free, digital music experiences and workshops available on demand with registration. Additionally, we will happily connect a musician with your classroom virtually this school year. Have an idea? Let us know and we'll see what we can do to meet the needs of your classroom!

**Contact Information**

Liz Kendall Weisser  
402-661-8592  
[lkweisser@omahasymphony.org](mailto:lkweisser@omahasymphony.org)



[www.omahazoo.com/education/](http://www.omahazoo.com/education/)

More than just a field trip destination, Omaha's Henry Doorly Zoo & Aquarium offers live interactive Virtual Field Trips hosted from our most popular exhibits, student workshops, outreach and more!

**Contact Information**

Peter Brunette

402-738-2092

[zoo2you@omahazoo.com](mailto:zoo2you@omahazoo.com)



[www.cas.unomaha.edu/oxbow](http://www.cas.unomaha.edu/oxbow)

Oxbow Writing Project's Invitational Summer Institute provides outstanding professional development for teachers in all grade levels and subjects. For anyone who wants to effectively incorporate writing into their classroom and reinvigorate their teaching and writing life. Receive graduate tuition or a stipend. We are part of the National Writing Project.

**Contact Information**

Dr. Maggie Christensen

402-554-2053

[mchristensen@unomaha.edu](mailto:mchristensen@unomaha.edu)



[www.sarpycountymuseum.org](http://www.sarpycountymuseum.org)

The Sarpy County Museum offers online and in-person resources. Online: 5-10min zoom lectures on various historical topics, virtual tours of several historic properties, traveling trunks, lesson plans, and research requests. In-person: Tours of several historic properties, lesson plans, access to all our research material, and traveling trunks. Any of these resources can be edited to fit your grade level, class, and what is currently being taught in class. The museum is also always free to the public as well as our resources.

### **Contact Information**

Erin Cejka  
402-292-1880  
[museum@sarpymuseum.org](mailto:museum@sarpymuseum.org)



[www.rosetheater.org](http://www.rosetheater.org)

The Rose Theater is Omaha's premier destination for professional children's theater, serving more than 200,000 children and families each year. For the 2020-2021 season, they are bringing the performing arts to your students through digital streaming theater performances and workshops.

### **Contact Information**

Lindy Glenn  
402-502-4638  
[lindyg@rosetheater.org](mailto:lindyg@rosetheater.org)



[www.uprrmuseum.org](http://www.uprrmuseum.org)

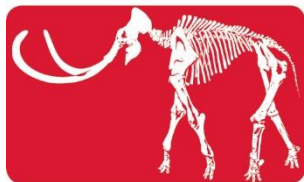
For grades 3-6, 7-9, and 10-12, the Union Pacific Railroad Museum offers a distance program in which students will analyze the legacy of the transcontinental railroad using primary sources. This 2-part program is flexible and adaptable to any method of at home or in-classroom learning. It features an independent primary source based creative project and a museum-led synchronous video primary source workshop.

### **Contact Information**

Lindsey Marolt

712-329-8307

[lmarolt@upcontractor.up.com](mailto:lmarolt@upcontractor.up.com)



UNIVERSITY OF NEBRASKA  
STATE MUSEUM



[www.museum.unl.edu](http://www.museum.unl.edu)

DISCOVERY AND CURIOSITY are central to the education mission of the University of Nebraska State Museum - commonly known as Morrill Hall on the UNL campus. We have scientific exploration available for your classrooms and students through one of our many Virtual Learning programs, our classroom Museum Encounter Kits, or search our website full of scientific research and information from our collections.

### **Contact Information**

Jennifer Ruyle

402-472-4075

[elephant@unl.edu](mailto:elephant@unl.edu)